



- Sign to indicate fire.
- Printed one-sided
- Suitable for practicing based on simulation.
- When realistically simulated fire is undesirable.
- Scratch and weatherproof screen print.

### Product details

The Flame Sign is a sign with the image of a flame. The sign indicates there is fire at a certain location and is suitable for practicing based on simulation. The sign can also be used in locations where no other form of simulated fire is desired, for example in an ATEX environment. The practice sign contains a scratch- and weatherproof screen print.

#### For more information:

FireWare B.V.  
De Stek 5  
1771 SP Wieringerwerf  
+31 (0)88 252 6000  
info@FireWare.nl  
www.FireWare.nl  
Nederland

### Technical information

Brand:	FireWare
Product weight (kg):	0,40
Product dimensions in cm (LxBxH):	54,0 x 34,0 x 0,1
Material:	Forex
Guarantee:	2 years on product and manufacturing defects

### Related products



027-028-011  
Perpendicular  
Flame Sign



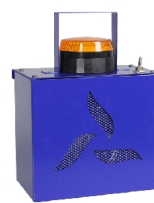
027-028-012  
Traditional "Rook"  
Sign



027-028-010  
Traditional  
Blocking sign



027-028-005  
Flame curtain  
Traditional



025-012-003  
Cracklingbox

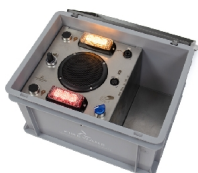
### You may also like



011-012-008  
FireWare  
Mini-Silkflame LED



011-012-005  
FireWare Phoenix  
Silkflame



025-012-051  
FireWare Pandora's  
Box V4



038-091-022  
Plastic Box with Lid,  
60x40x9 cm, closed  
handle



025-012-041  
Pandora's Box 230