



- Sign to indicate fire.
- Pushed together and printed double-sided
- Remains itself easily
- Visible from 4 sides
- Suitable for practicing based on simulation.
- When realistically simulated fire is undesirable.
- Scratch and weatherproof screen print.
- 34x 54 cm, packing in Plastic Box (excluded) possible.

Product details

Traditional and safe

The perpendicular Flame Sign is a sign with the image of a flame. The sign indicates there is fire at a certain location and is suitable for practicing based on simulation. The sign can also be used in locations where no other form of simulated fire is desired, for example in an ATEX environment. The training board consists of 2 separate boards that are pushed together at right angles. This keeps the board standing independently, the print is visible on 4 sides. The practice sign contains a scratch- and weatherproof screen print.

Easy to place in a Plastic Box 60x40x9 cm (excluded) per 5 pieces.

For more information:

FireWare B.V.
De Stek 5
1771 SP Wieringerwerf
+31 (0)88 252 6000
info@FireWare.nl
www.FireWare.nl
Nederland

Technical information

Brand:	FireWare
Product weight (kg):	0,80
Product dimensions in cm (LxBxH):	54,0 x 34,0 x 0,1
Material:	Forex
Guarantee:	2 years on product and manufacturing defects

Item consists of

027-028-011 Perpendicular Flame Sign

Related products



027-028-009
 Traditional Flame Sign



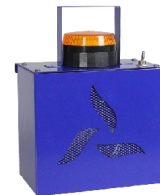
027-028-010
 Traditional Blocking sign



027-028-012
 Traditional "Rook" Sign



027-028-005
 Flame curtain Traditional



025-012-003
 Cracklingbox

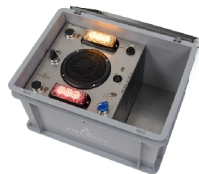
You may also like



011-012-008
 FireWare Mini-Silkflame LED



011-012-005
 FireWare Phoenix Silkflame



025-012-051
 FireWare Pandora's Box V4



031-030-003
 FireWare Burning Smell Spray



038-091-022
 Plastic Box with Lid, 60x40x9 cm, closed handle

For more information:

FireWare B.V.
 De Stek 5
 1771 SP Wieringerwerf
 +31 (0)88 252 6000
 info@FireWare.nl
 www.FireWare.nl
 Nederland